

# Personality plus

BOWERBIRD INSTINCTS AND A LOVE OF COLOUR MAKE THIS COUPLE'S HOME A CELEBRATION OF VIBRANT DESIGN

Story KYLIE JACKES Styling HAYLEY JENKIN Photography HANNAH PUECHMARIN



**SPARKING JOY** This cheery 1935 Queenslander is a far cry from the beige home that interior designer Lloyd Hodgkinson and his husband David purchased nine years ago. The original sun room and entrance (above) is now one of the only white spaces in the home, forming an indoor greenhouse to journey through. "We intentionally kept this room white to act as a sort of 'palate cleanser' to the bright yellow living area [opposite] it steps into," says Lloyd. The front door is painted in Dulux Grass Court, while the floral Bidjar rug is from The Rug Establishment. >

ARTWORKS UNKNOWN ARTISTS ACTUAL PAINT COLOUR MAY VARY ON APPLICATION





ACTUAL PAINT COLOUR MAY VARY ON APPLICATION

W

hen entering the Brisbane home of Lloyd Hodgkinson and his husband David, there are no prizes for guessing the couple aren't minimalists. Greeted with a jungle of indoor plants, colourful walls, a profusion of pattern and antique finds, their personalities and passions shine within their cosy Queenslander. "It's maximalist, biographical, classic and, most importantly, comfortable," says Lloyd, who's known for the bright, individualised homes he creates as principal of Oliver Mark Interiors. "This is our first home and, incredibly, it was the first home we inspected when we began searching. We instantly fell in love with the charm of the period detailing and unique character that can't be replicated in newer constructions."

The home's bones were solid, but the kitchen and bathroom needed an update, as did the beige-on-beige interior. Although eager to add their own stamp, the couple took a gradual approach over nine years as their time and budget permitted.

"When we first moved in, the only furniture we owned were two terribly uncomfortable suede sofas, a bed, bookcase and a \$30 plastic folding table from Bunnings, which sat in our dining room for six years until we could afford the antique table that we truly desired," recalls Lloyd. One of the first steps was painting the interior white to create a fresh canvas, which helped Lloyd and David assess each space and consider how they wanted to live and feel within them. Injecting personal style was also paramount for the avid collectors. Every window presented an opportunity for drapes, with lampshades, bedheads, chairs and cushions also avenues for textures and prints.

On the cusp of their kitchen renovation, a pivotal moment was visiting Anna Spiro's Melbourne home, which Lloyd says solidified his "design DNA". "Anna's kitchen is painted pale yellow, with an incredible bright purple island bench and orange internals. As soon as we saw it, we knew committing to bold colours was what we wanted to do."

Inspired to create a home that sparked joy, a vibrant fitout followed, with a glorious green kitchen, sunny living area, moody bedrooms, a blue-infused office and a bathroom in soft pink. "Beyond the physical comfort, it really encompasses a sense of emotional wellbeing and contentment that comes from surrounding yourself with elements like textures, lighting, patterns, books and flowers," says Lloyd. "I feel truly connected to our home and what we've created, and for the time being it's more than enough."

*For more stunning homes, visit [homebeautiful.com.au](http://homebeautiful.com.au).*

**LIVING AREA** It took about 15 sample pots before the couple spotted Dulux Sunbound – the perfect golden hue for the living area (opposite). "Yellow can be a divisive colour, but I've found it's a very easy colour to live with," shares Lloyd. "It is like a neutral in the sense that you can add almost any accent colour." Doing just that, the space is boldly furnished with a custom fringed sofa by Wills Bisgrove in 'Sahara' Racing Green from Kirkby Design. The Anna Fitzpatrick artwork above is flanked by custom ledges holding 18th century vessels. >



**DINING AREA** A Hudson Furniture hutch painted in Dulux Bengal Blue is a stately feature in the dining space (top left & right). It is joined by an antique English oak sideboard, which sits below a decoupage artwork with majolica plates grouped on either side. “They’re mostly 19th century and from various makers such as Wedgwood, George Jones, Mintons and Joseph Holdcroft,” says Lloyd. **LIVING AREA** A 19th century French occasional chair from The Antique Guild was reupholstered in cheerful ‘Citron Squiggle’ by Sibyl Colefax & John Fowler to complement the living area (bottom left & right). Facing it is a vintage armchair the couple reupholstered with ‘Rockbird’ in Indigo by GP & J Baker. An antique coffee table laden with books is grounded by a rug from The Rug Establishment. **STUDY** Each room has its own personality and in the office (opposite), walls in Dulux Black Drop create a calming canvas. “It’s a jacaranda blue,” says Lloyd. The 1820s mahogany secretaire, from Michael Allen Antiques, holds a selection of the couple’s vast book collection. >



ARTWORKS (THIS PAGE, TOP RIGHT) SHERYL WHIMP CO. ALL OTHER ARTWORKS UNKNOWN ARTISTS AT THE TIME OF APPLICATION



“ENTERTAINING friends and family IS A GREAT passion OF OURS. DAVID COOKS AND I SET THE TABLE” LLOYD

ACTUAL PAINT COLOUR MAY VARY ON APPLICATION

KITCHEN A white kitchen was never on the cards for the couple, who grappled with the existing dysfunctional layout and dreary scheme for years before this vast transformation. “We swapped the location of the sink and oven to improve flow and efficiency, and introduced a large window to overlook the garden,” says Lloyd. Glossy new cabinetry is in Dulux Jungle Adventure, with benchtops of Calacatta Viola from SNB Stone. Fittingly, the Roman blind features culinary-themed fabric: ‘Le Marche’ in Blanc from Pierre Frey. >



**GUEST BEDROOM** Far from an afterthought, visitors are treated to their own cosy room clad with VJ-panelled walls in Porter's Paints Braidwood. A bedhead upholstered in Braquenié 'Le Grand Corail' in Rouge Fond Crème (this page) offers an explosion of pattern. The Suzani floral throw is from Najaf Rugs & Textiles and the lampshade of marbled paper is a Spiro Store find. Florals continue in the Anna Costa artwork above the bed, which the couple bought on holidays in France. Original heliogravures by Georges Braque, Henri Matisse and Francisco Bores hang on either side of the cabinet (opposite).

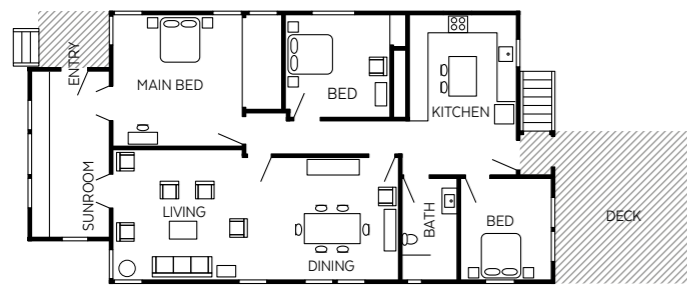


ARTWORK THIS PAGE RIGHT DAVID BROMLEY ACTUAL PAINT COLOUR MAY VARY ON APPLICATION

**WE LOVE...  
pattern play**  
From bold geometric shapes to quirky motifs, stripes and florals, the abundance of pattern adds interest and depth. "For us, spaces that are vibrant and expressive - filled with the richness of colour, texture and pattern - bring a sense of joy, comfort and inspiration," says Lloyd. "While some people may not take such a heavy-handed approach, we're maximalists so the more layers, the merrier." For a range of fabric, visit [elliottclarke.com.au](http://elliottclarke.com.au).



FLOOR PLAN



**BATHROOM** The home's original bathroom was "beige-on-beige and depressing," recalls Lloyd, who transformed the space (above, left & right). "Rather than a glass shower screen, we felt a cotton embroidered shower curtain was beautifully soft and chic," he says of the addition from Annie Selke. Calacatta Oro subways line the walls, with Syvota marble floor mosaics and a border of Indian green marble, all from Urban Tile Company. Pierre Frey 'Kimono' wallpaper in Cerisier acts as a soft backdrop for an original Georges Braque heliogravure (top left) and a vintage painting from

France (top right). Bloomingdales Lighting sconces wear custom shades in an ikat fabric from Style Revolutionary. **MAIN BEDROOM** Walls in Dulux Ceylon Tea cocoon the couple's retreat (opposite). The feast of fabrics includes a throw from Slowdown Studio, a bedhead in Jim Thompson 'Garden Party' in Orangerie, and a Roman blind in Rubelli 'Quatrefoil' in Lavender. "Most artworks are antique engravings that we have collected over the years. We commissioned the large nude artwork above the bed by Brisbane artist Sheryl Whimp," shares Lloyd. >

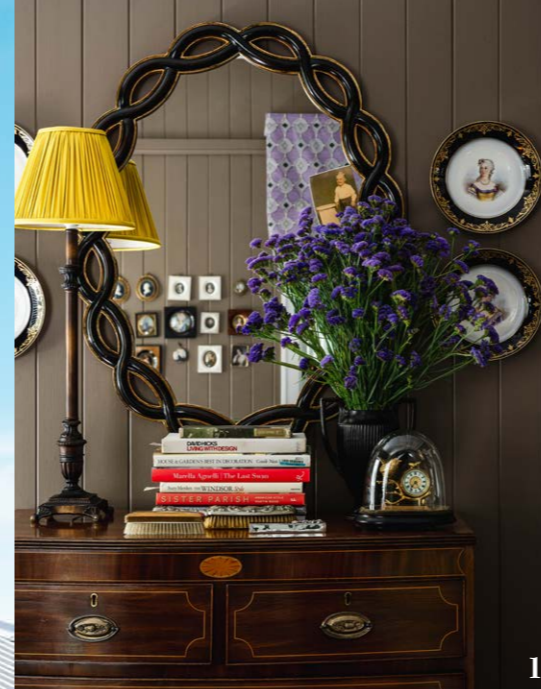


**Source book**

*Interior design: Oliver Mark Interiors, olivermark.au.*

**FACADE** Rather than the bold colours that feature inside, outside the look is softer, with weatherboards painted in Dulux Willow Leaf, accents and stairs in Dulux Thicket and trims in Dulux White Verdict Quarter. Trailing plants spill from baskets and pots alongside neat topiary balls and an Emac & Lawton ‘Stanmore’ outdoor sconce in Antique Silver.

**COTTAGE CHARM**



**INSIDE STORY**  
**Lloyd & David's home**  
*Who lives here?*  
 Interior designer Lloyd Hodgkinson, his husband David, who owns a salon, the couple's 20-year-old Cockatiel Muffy, and chickens Gilma, Vernal, Joyce and Elva.  
**Best decision you made?**  
 Lloyd: "Renovating our kitchen. It not only significantly improved the aesthetic appeal but also the functionality and overall comfort. It has become another room we now dine and entertain in."  
**Biggest renovating splurge?**  
 "Most definitely the kitchen and bathroom! We both had a very hard time compromising, so the investment was significant. But we don't regret any of it. Each space brings us so much joy."  
**What's next on the agenda?**  
 "The laundry and some light landscaping at the front of the property."



ARTWORK (6) ANNA COSTA. ALL OTHER ARTWORKS UNKNOWN ARTISTS. ACTUAL PAINT COLOURS MAY VARY ON APPLICATION.

1. In the main bedroom, antique drawers join vintage works and a Cromwell mirror.
2. David (left) and Lloyd (right), pictured with feathered friends Gilma and Elva.
3. The bathroom vanity is topped with Calacatta Viola marble from SNB Stone; the Brodware tapware in Brushed Nordic Brass adds to the luxurious ambience.
4. One of the couple's favourite settings is their Il Viaggio di Nettuno tableware and Serenk napery from Peter's of Kensington. The Casa Mia dining chairs are covered with Ottoline 'Sporty Stripes' in Green.
5. The cabinet of curiosities in the study.
6. In the guest room, the cute scalloped pillowcases are from Pigott's Store.
7. Gleaming pans cosy up the kitchen.